



Style 360 Repair Clamp

**For fast, easy, safe repair of leaks in
cast/ductile iron and steel mains**



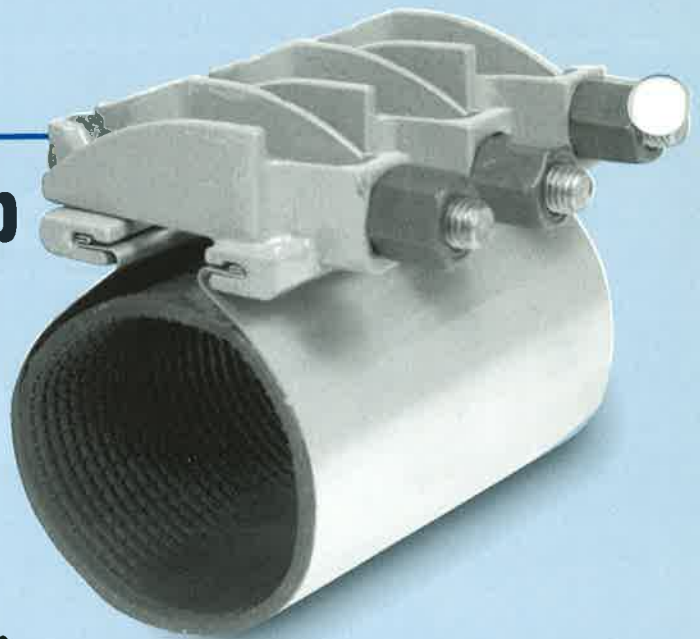
DRESSER

DRESSER®

Style 360® Repair Clamp

For fast, easy, safe repair of leaks in cast/ductile iron and steel mains...

- **Smaller sizes feature flexible band for easier installation**
- **7.5 inch wide clamp has three nuts – middle nut can be used to pre-tighten clamp**
- **Special one-inch long nuts allow tightening with standard deep socket wrench**



The Dresser® Style 360® repair clamp offers simplicity and ease of installation. **Just wrap the clamp around the pipe, drop the bolts in place and tighten.** It's that simple! Moreover, special one-inch long nuts allow the use of a standard deep socket wrench for complete tightening. In the popular 7.5 inch clamp width, there is also a third nut so the middle nut can be used to pre-tighten the clamp. Additionally, the smaller sized clamps feature a flexible band which means less holding force is required while tightening.

With the "360" clamp you can repair holes, breaks and splits in the pipeline. You can use it where pipe ends are separated, or where ends are deflected up to 4 degrees or 1/8 inch. Or you can join two pipes with a variation of 1/4 inch outside diameter.

Clamp features include a tapered gasket with a gridded design and the spanner is molded flush with the gasket to prevent "hang up." The "360" has a stainless band, lugs of rugged ductile iron and bolts of corrosion-resistant Dresserloy.

The Style 360 clamp features:

Drop-In Bolts

No need to remove bolts in the ditch. No loose parts to misplace.

Multi-Band Clamp

Features a multi-band design in the 14" through 24" sizes. Clamp is packaged and shipped "in the flat" meaning the bands are not formed to the radius of the pipe. Reduces storage space and installation time, and has twice the adjustment range of the single clamp.

Available with Service Outlet

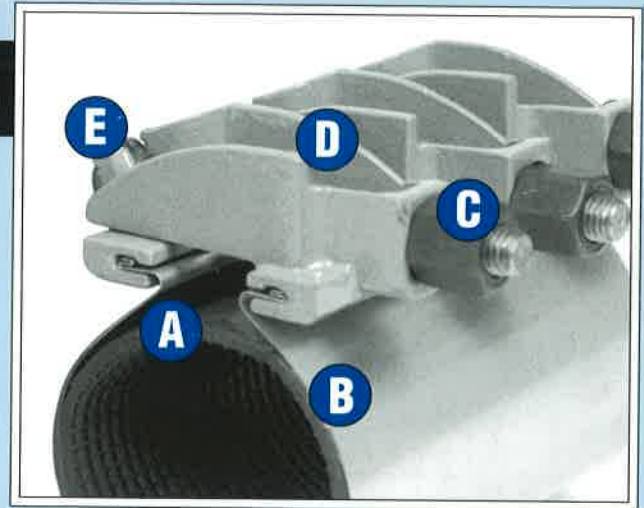
The service outlet addition permits fast, easy repair of pulled or broken service connections. Service outlet clamp can be used on complete circumferential breaks even when the pipe ends are separated or deflected up to 4 degrees—without changing the service location or tapping the main.

Service outlet clamp is available in sizes 3" - 14" with widths up to 20".

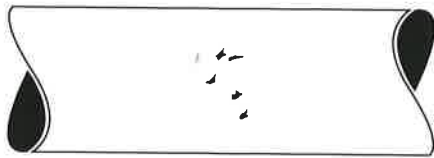


Dresser "360" Clamp Features...

- Flexible Spanner (A) and Band (B)... for ease of installation
- Long Nuts (C)...fit standard deep socket wrench
- Ductile Iron Lugs (D)...lower costs
- Drop-In Bolts (E)...no loose parts



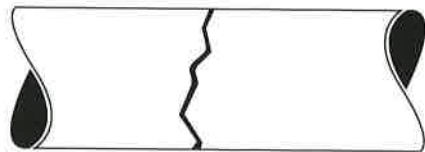
The "360" clamp serves a variety of pipe repairs!



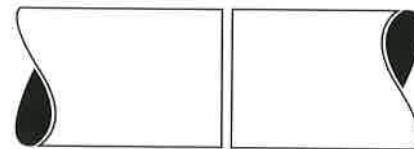
Repair pin holes and minor leaks...



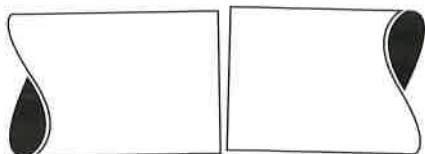
Available in wider lengths for repair of longitudinal splits...



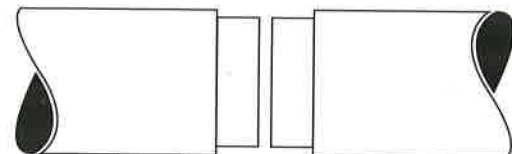
Stop leaks through circumferential breaks...



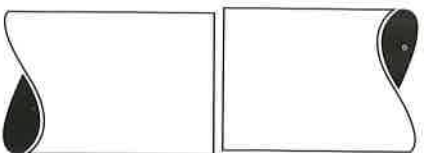
Use as a coupling... allows pipe end separation up to 3/8"...



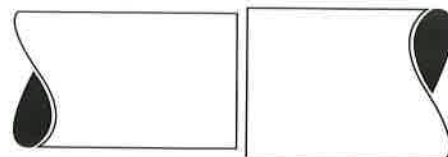
Join pipe with deflections up to 4°...



Connect rough barrel or machined-end ac pipe...



Join misaligned pipe ends offset up to 1/8"...



Join diameter variations of up to 1/4"

Style 360 Repair Clamp Specifications

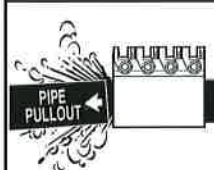
RANGE OF FIT (OD)	CLAMP WIDTHS (INCHES)	RANGE OF FIT (OD)	CLAMP WIDTHS (INCHES)
2.35 - 2.63 2.70 - 3.00 2.97 - 3.25	7-1/2, 10, 12-1/2, 15	2 Band Sizes 14.38 - 15.13 15.07 - 15.82 15.92 - 16.67 16.56 - 17.31 17.15 - 17.90 17.82 - 18.57 18.46 - 19.21 19.23 - 19.98 19.90 - 20.65 20.70 - 21.45 21.52 - 22.27 22.12 - 22.87 22.90 - 23.65	10, 12-1/2, 15, 20, 25, 30
3.46 - 3.70 3.73 - 4.00 3.96 - 4.25 4.45 - 4.86 4.74 - 5.14 4.95 - 5.35	7-1/2, 10, 12-1/2, 15, 20, 25		
5.22 - 5.62 5.95 - 6.35 6.56 - 6.96 6.84 - 7.24 7.05 - 7.45 7.45 - 7.85 7.95 - 8.35 8.54 - 8.94 8.99 - 9.39 9.27 - 9.67 9.68 - 10.08 9.70 - 10.10 10.64 - 11.04 11.04 - 11.44 11.34 - 11.74 11.75 - 12.15 12.00 - 12.40 12.62 - 13.02 13.10 - 13.50 13.40 - 13.80 13.70 - 14.10 14.00 - 14.40	7-1/2, 10, 12-1/2, 15, 20, 25, 30	3 Band Sizes 23.28 - 24.38 24.38 - 25.48 25.70 - 26.80 26.48 - 27.58 27.65 - 28.75 28.73 - 29.83 29.62 - 30.71	10, 12-1/2, 15, 20, 25, 30

Maximum Working Pressure		
0.024" Thick Band		
Water Service	Gas Service	
2.12 - 3.70" 250 PSI	2.12 - 5.35" 125 PSI	
3.71 - 4.60" 220 PSI		
4.61 - 5.35" 170 PSI		
0.036" Thick Band w/No Outlet		
Water Service	Gas Service	
5.22 - 7.99" 200 PSI	5.22 - 9.43" 125 PSI	
8.00 - 9.75" 160 PSI	9.44 - 10.81" 115 PSI	
9.76 - 12.03" 120 PSI	10.82 - 12.49" 85 PSI	
12.04 - 14.40" 90 PSI	12.50 - 14.40" 65 PSI	
0.036" Thick Band With Outlet		
Water Service	Gas Service	
3.46 - 7.99" 200 PSI	3.46 - 9.43" 125 PSI	
8.00 - 9.75" 160 PSI	9.44 - 10.81" 115 PSI	
9.76 - 12.03" 120 PSI	10.82 - 12.49" 85 PSI	
12.04 - 14.40" 90 PSI	12.50 - 14.40" 65 PSI	
0.048" Thick Multi-Band w/No Outlet		
Size	Water	Gas
14.38 - 16.08"	130 PSI	95 PSI
16.09 - 17.90"	110 PSI	80 PSI
17.91 - 20.65"	85 PSI	60 PSI
20.66 - 23.65"	60 PSI	45 PSI

NOTE: On any given installation, the pressure capability of the clamps is influenced by the type and extent of the damage, service conditions, environmental conditions and installation workmanship.

Style 360 Repair Clamp Material Specifications	
Metal Parts	Gasket
Band AISI Type 304 Stainless Steel	• 55 Durometer
Lugs Ductile Iron	• Gridded Surface
Nuts Dresserloy	• Mating Ends Tapered
Bolts Dresserloy	
Spanner AISI Type 304 Stainless Steel	

! WARNING



When pipe pullout could occur, pipe joint **MUST** be anchored. Failure to anchor pipe joint could result in escaping line content that could cause property damage, serious injury or death.